



FIELDSTONE  
AT CHESTER SPRINGS



# Personal Care Pricing

The monthly rent of your apartment includes many services and amenities – so you can enjoy the carefree, independent lifestyle to which you're accustomed to, but with the added peace of mind that comes with living in the area's premier personal care community. Better yet, if you need assistance we offer flexible care programs designed and customized to your needs. Here, you'll get the lifestyle you want with the quality care you deserve.

## RENTAL RATES

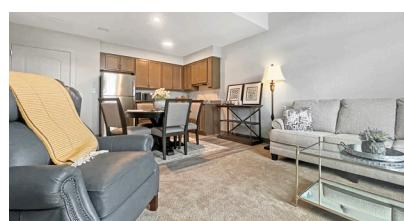
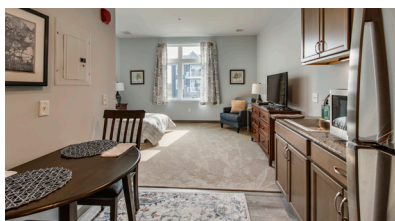
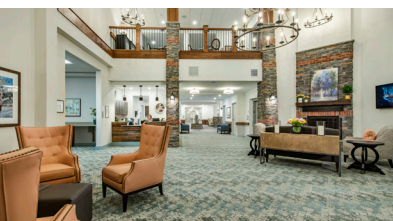
Apartment Type	Daily Rate	Monthly Rate (Based on 30 Days)
Standard	starting at \$211	starting at \$6,330
One Bedroom	starting at \$248	starting at \$7,440
Two Bedroom	starting at \$295	starting at \$8,850
Second Person Fee	\$1,800	

## CARE PROGRAM RATES

Levels of Care		
Level 1	\$20/Day	\$600/Month
Level 2	\$40/Day	\$1,200/Month
Level 3	\$60/Day	\$1,800/Month

Medication Management		
Basic	\$15/Day	\$450/Month
Plus	\$20/Day	\$600/Month

Published rates are based on a 30-day month and are subject to change without notice.



145 Byers Road, Chester Springs, PA 19425  
[www.fieldstonelife.com](http://www.fieldstonelife.com) | 484.713.8650



06.2025

## SERVICES AND AMENITIES

### Utilities

- **Included:** Electricity, air conditioning, heating, water, garbage/sewer.

### Technology

- Phone, cable & internet bundle: **\$95/month.**

### Dining

- **Included:** Three meals daily, snacks always available.
- Guest meals and delivery services for your convenience for a fee.

### Health & Wellness Services

- **Included:** Daily personal wellness checks, licensed nurse on-site 24/7, caregiver support groups.
- Customized care programs are provided based on every resident's unique needs. Rates vary based on assessments completed by our dedicated wellness team.
- Additional healthcare services will be provided in association with local healthcare providers. Services include on-site physician appointments, rehabilitation services, healthcare coordination and, intermittent home health services. Pricing varies based on insurance coverage.

### Transportation

- **Included:** Scheduled group transportation to shopping activities, and other outings.
- Scheduled, private transportation is available for your convenience.
  - Complimentary within 10-mile radius.
  - Other charges may apply for waiting or increased distances.

### Housekeeping & Laundry Services

- **Included:** weekly light housekeeping and linen service.
- Personal laundry service: **\$48/month.**
- Additional housekeeping services available for your convenience for a fee.

### Maintenance

- **Included:** routine preventative and 24/7 emergency maintenance.
- Additional maintenance services available for your convenience for a fee.

### Salon & Spa Services

- A full service salon is located on-site.
  - Prices vary from approximately \$10 to \$75.

## ADDITIONAL FEES FOR RESIDENCY

### One time community fee:

- \$3,500.00 (*non refundable*)
- There are no additional security deposits or buy-in fees.