



FIELDSTONE
AT CHESTER SPRINGS



The Compass Memory Care™ Pricing



The Compass Memory Care™ at Fieldstone creates a comfortable and homelike atmosphere for those living with memory impairment in a safe and secure living environment. We promote a sense of belonging and purpose, all while emphasizing the unique needs, backgrounds, and histories of each resident.

The Compass Memory Care™ is more than a place to live, it's a place to thrive!

RENTAL RATES

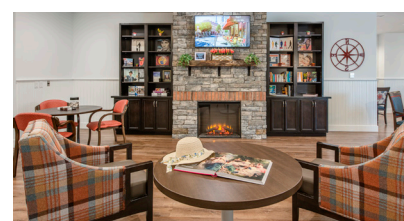
Apartment Type	Daily Rate	Monthly Rate <i>(Based on 30 Days)</i>
Private Suite	starting at \$313	starting at \$9,390
Private Deluxe Suite	starting at \$329	starting at \$9,870
Companion Suite – Shared	starting at \$238	starting at \$7,140
Companion Suite – Private	starting at \$337	starting at \$10,110
Second Person Fee	\$75	\$2,250

CARE PROGRAM RATES

We believe in keeping things as simple and transparent as possible. That's why our pricing includes standard care, medication management, technology package, and laundry services. Should your loved one's care and medication management needs increase over time, we offer an Enhanced Care option.

Care & Medication Management		
Basic	Included	
Enhanced	\$40/Day	\$1,200/Month

Published rates are based on a 30-day month and are subject to change without notice.



145 Byers Road, Chester Springs, PA 19425
www.fieldstonelife.com | 484.713.8650



01.2026

SERVICES AND AMENITIES

Utilities

- **Included:** Electricity, air conditioning, heating, water, garbage/sewer.

Technology

- **Included:** Phone, cable & internet bundle

Dining

- **Included:** Three meals daily, snacks always available.
 - Guest meals and delivery services for your convenience for a fee.

Health & Wellness Services

- **Included:** Daily personal wellness checks, licensed nurse on-site 24/7, caregiver support groups.
 - Customized care programs are provided based on every resident's unique needs. Rates vary based on assessments completed by our dedicated wellness team.
 - Additional healthcare services will be provided in association with local healthcare providers. Services include on-site physician appointments, rehabilitation services, healthcare coordination and, intermittent home health services. Pricing varies based on insurance coverage.

Transportation

- **Included:** Scheduled group transportation to shopping activities, and other outings.
- Scheduled, private transportation is available for your convenience.
 - Complimentary within 10-mile radius.
 - Other charges may apply for waiting or increased distances.

Housekeeping & Laundry Services

- **Included:** weekly light housekeeping, linen, and personal laundry service.
 - Additional housekeeping services available for your convenience for a fee.

Maintenance

- **Included:** routine preventative and 24/7 emergency maintenance.
 - Additional maintenance services available for your convenience for a fee.

Salon & Spa Services

- A full service salon is located on-site.
 - Prices vary from approximately \$10 to \$75.

ADDITIONAL FEES FOR RESIDENCY

One time community fee:

- \$3,500.00 (non refundable)
- There are no additional security deposits or buy-in fees.